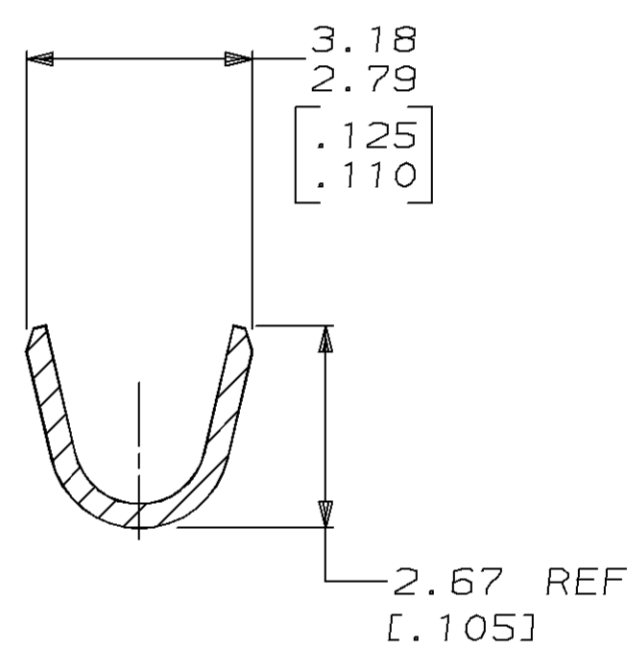
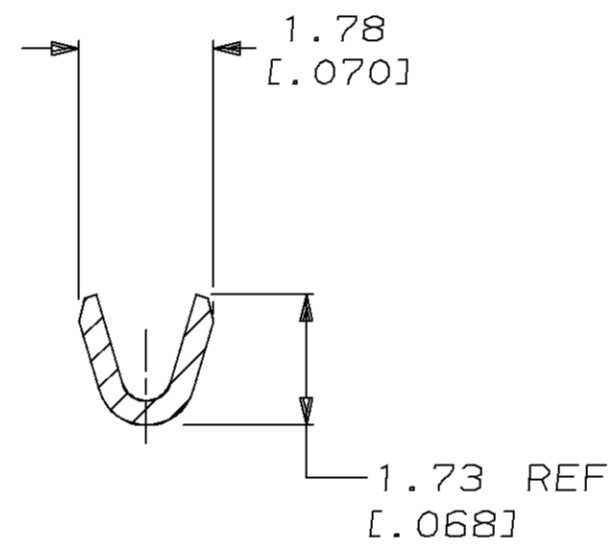
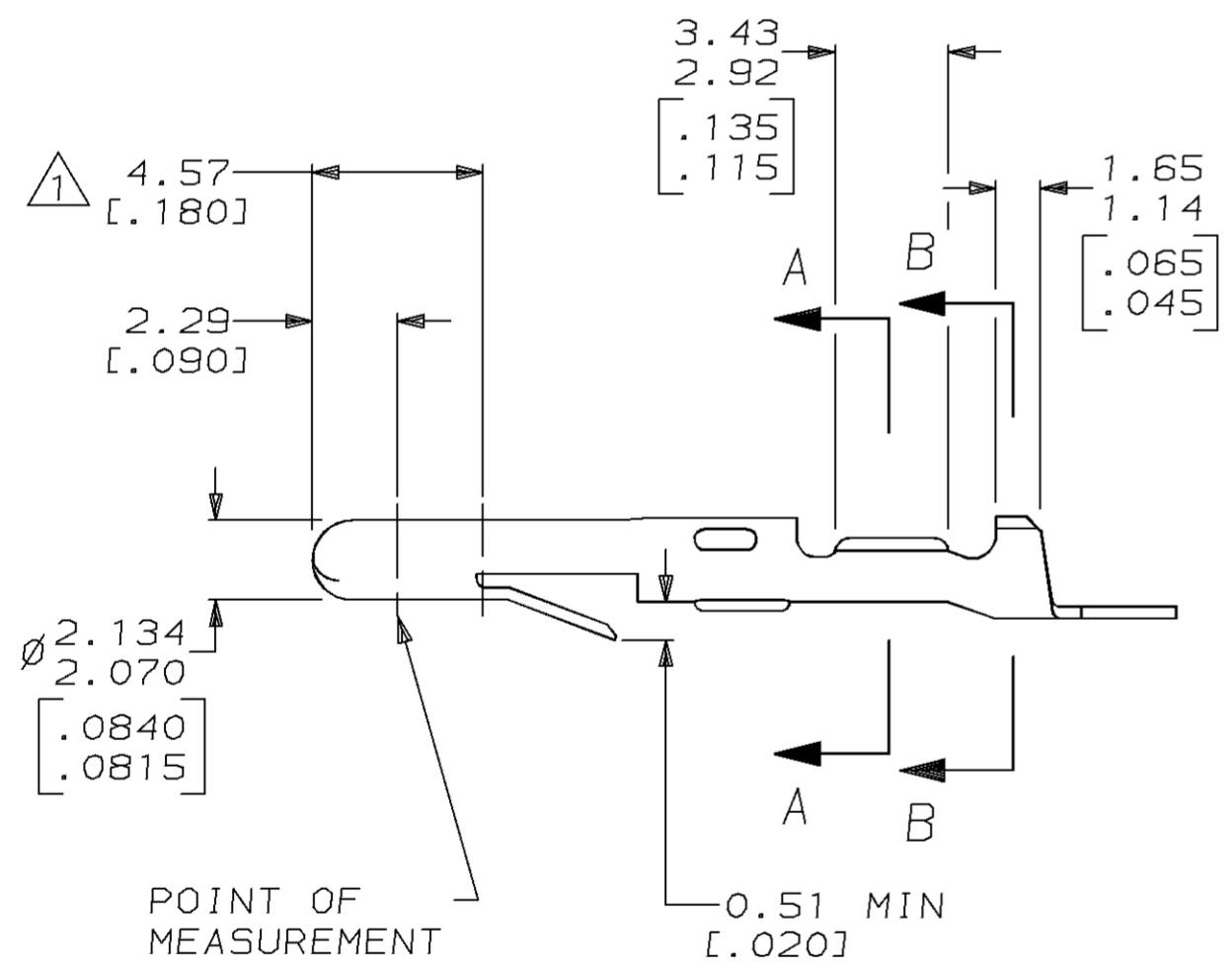
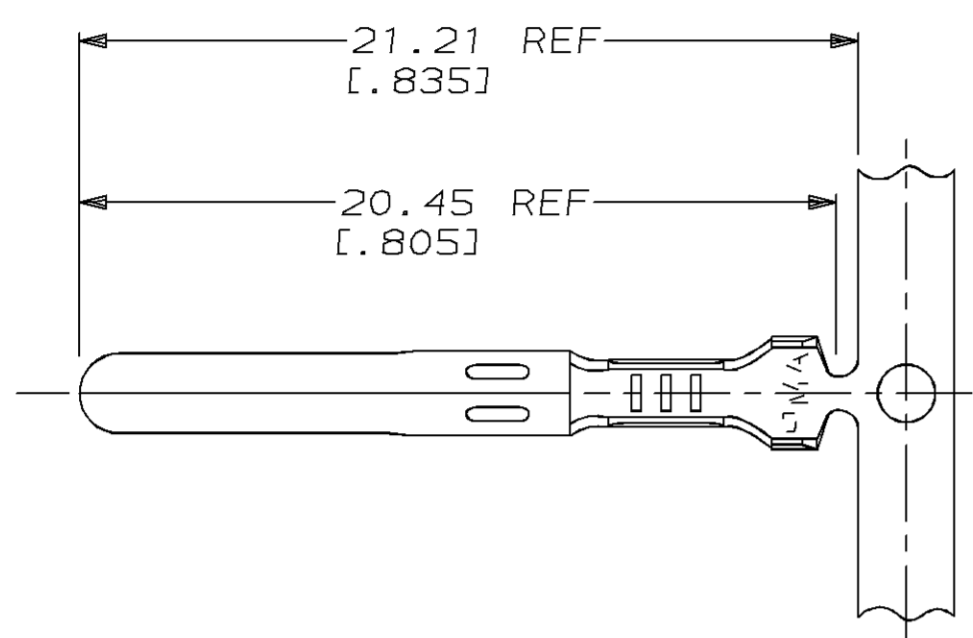


LOC	DIST	P	F	ZONE	LTR	DESCRIPTION	DATE	APPD
CM	53				U	REV PER EC 0730-0142-94	8-12-94	RV RS

- 1. PLATE OVERALL WITH 0.00127 [.000050] MIN NICKEL, THEN PLATE INSIDE OF WIRE BARREL AND ON TIP OF PIN WITH 0.00076 [.000030] MIN GOLD.
- 2. WIRE RANGE: 0.05 - 0.4 mm<sup>2</sup> [30 - 22 AWG].
- 3. INSULATION RANGE: 1.02-1.91 [.040-.075] DIA.
- 4. DIMENSIONS IN BRACKETS ARE IN INCHES.



1	0.30 [.012] BRASS	350079-5
PRE-TIN	0.30 [.012] PH BRZ	350079-4
PRE-TIN	0.30 [.012] BRASS	350079-1
FINISH	MATERIAL	PART NO

DO NOT SCALE PRINT. UNLESS SPECIFIED DIMENSIONS IN mm [INCHES] TOLERANCES ON : 2 PLC DEC ± 0.13 [.005] 3 PLC DEC ± - ANGLES ± -	DR 2-15-93 K. SALMON	<b>AMP</b> AMP Incorporated Harrisburg, PA 17105-3608	
	CHK 2-15-93 R. SWING		
MATERIAL	APPD 2-22-93 C. MARTIN	NAME	
SEE TABLE	APPD 2-22-93 C. MARTIN	PIN, MATE-N-LOK™	
FINISH	PRODUCT SPEC	SIZE	CAGE CODE
SEE TABLE	APPLICATION SPEC	C	00779
	WEIGHT -	DRAWING NO	G=350079
		SCALE	5:1
		SHEET	1 OF 1

**METRIC**

THIS DRAWING IS A CONTROLLED DOCUMENT FOR AMP INCORPORATED. IT IS SUBJECT TO CHANGE AND THE CONTROLLING ENGINEERING ORGANIZATION SHOULD BE CONTACTED FOR THE LATEST REVISION.